

ARROWWOOD



HOME FEATURES:

Total Living Area **1,664** SF

Main Level: **1,664** SF

Lower Level: **1,664** SF (unfinished)

Bedrooms: **3** bedroom

Bathrooms: **2** bath

Garage Type: **2-stall**

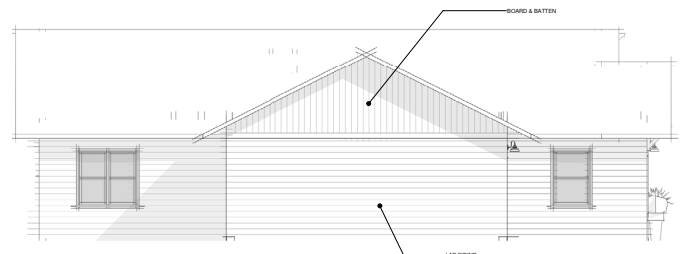
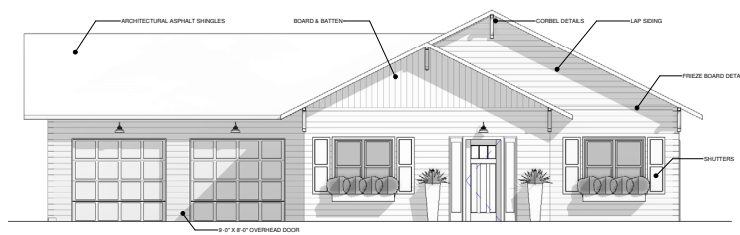
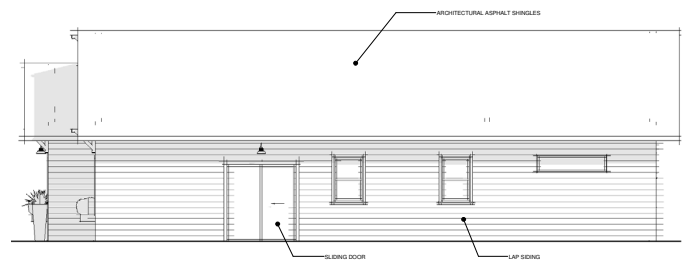
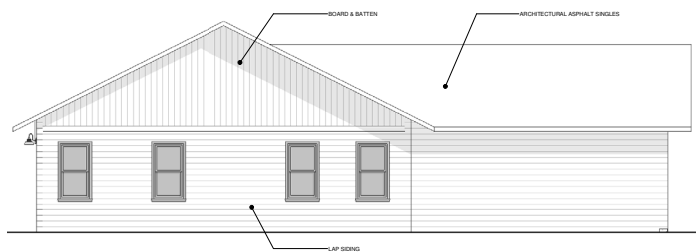
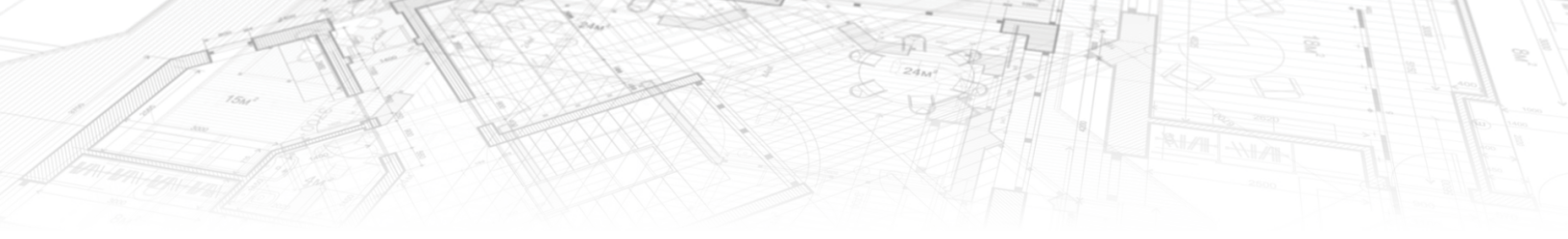


THE PERFECT
STARTER HOME WITH
THREE BEDROOMS,
TWO BATHROOMS,
AND A LARGE LIVING
SPACE NEAR THE
FRONT OF THE HOME.



LINCHPINCORP.COM

414 MAIN AVENUE, SUITE 3 • BROOKINGS, SD 57006 • 605.572.8012 • CLINT@LINCHPINCORPORATION.COM



LINCHPINCORP.COM

414 MAIN AVENUE, SUITE 3 • BROOKINGS, SD 57006 • 605.572.8012 • CLINT@LINCHPINCORPORATION.COM