

CEDARCREST



HOME FEATURES:

Total Living Area 1,678 sf

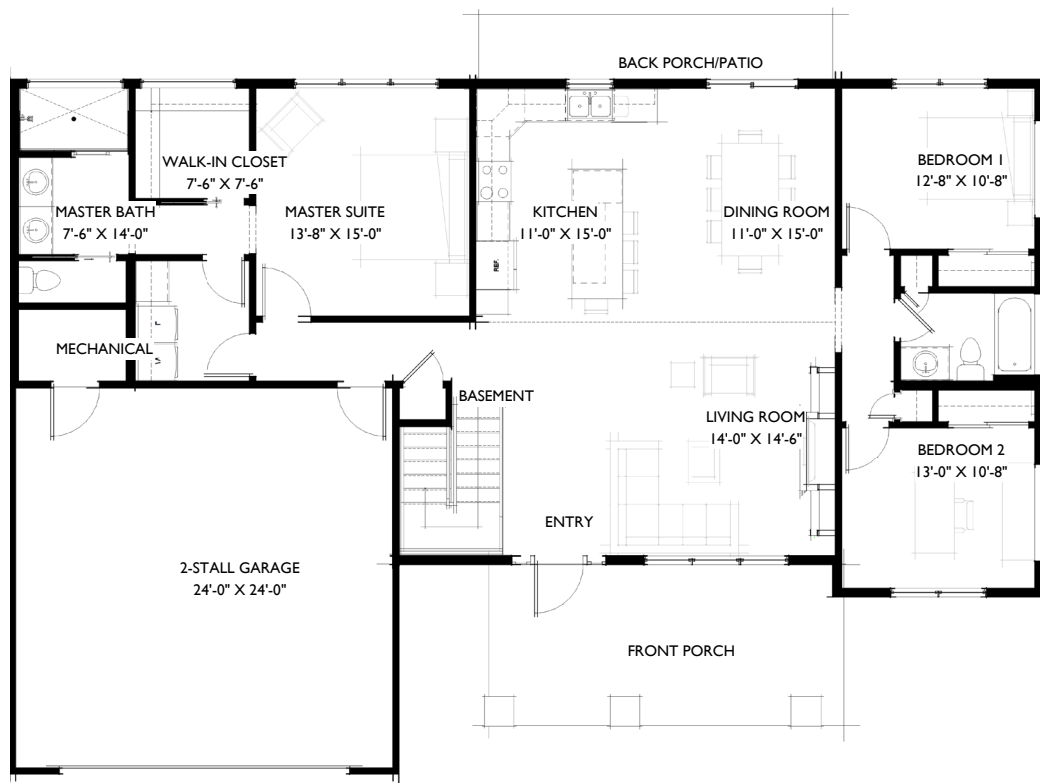
Main Level: 1,678 sf

Lower Level: 1,678 sf (unfinished)

Bedrooms: 3 bedroom

Bathrooms: 2 bath

Garage Type: 2-stall

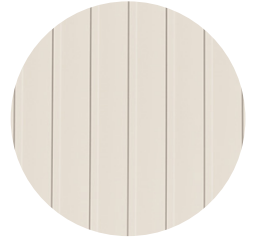
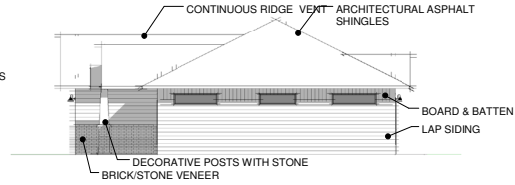
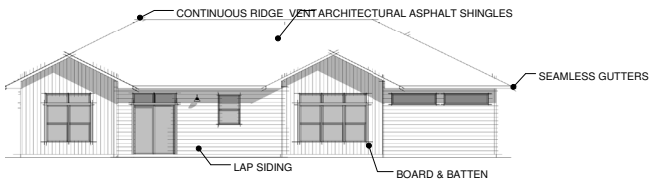
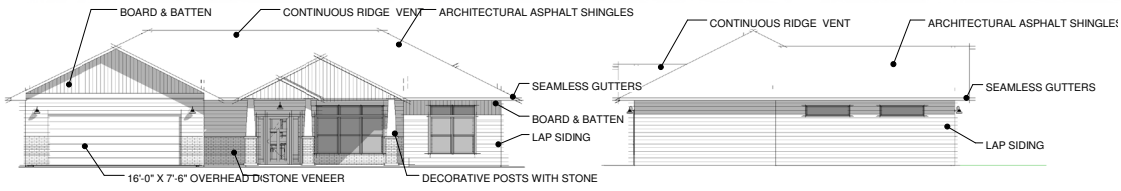
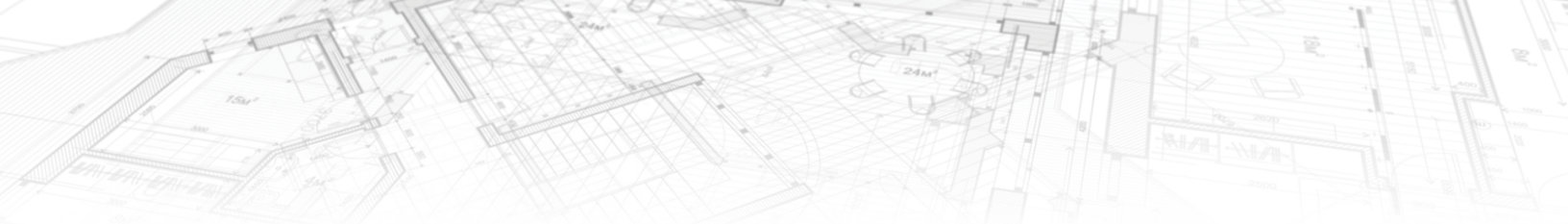


THIS PLAN OFFERS AN OPEN CONCEPT KITCHEN, DINING, AND LIVING AREA AND A LARGE MASTER SUITE WITH A WALK IN CLOSET.



LINCHPINCORP.COM

414 MAIN AVENUE, SUITE 3 • BROOKINGS, SD 57006 • 605.572.8012 • CLINT@LINCHPINCORPORATION.COM



LINCHPINCORP.COM

414 MAIN AVENUE, SUITE 3 • BROOKINGS, SD 57006 • 605.572.8012 • CLINT@LINCHPINCORPORATION.COM